

## ROS communications and some Audio tips' tricks

Hi guys. I've been not active in radio for years and when arranging all stuff for a return, I came into ROS. "Nice appropriate for your little station", I was said.

So, I download 5.8.9 version of ROS software and... it crashes. This was last Friday morning. After a eMail to Jose Ros, I found myself hang at the phone with Jose at 4 in the Saturday morning.

Today, after nearly 100 eMails, more than 10 hours of phone calls, dozens of compilations and other tests, we present you our final (we hope so) results.

I'm running Windows 7 Home Premium (32 bits) and my Medion new PC has a Realtek HD sound card that is (as usual nowadays) mother board embedded.

Other pretty thing is that I have now (don't laugh at me) front and rear audio connectors with plugging detection feature.

### The input audio problem

The problem with ROS had to do with these last lines. When a sound card with plug detection has no audio source connected, it like it says to Windows kinda "I'm not here". Jose has solved this problem, ROS soft now, not only looks for sound cards present in the PC, also looks for input devices.

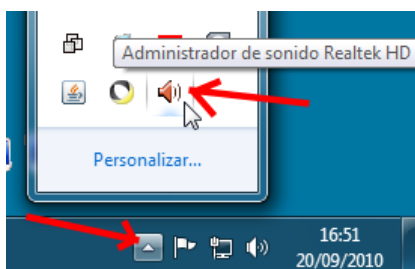
Before this, the problem could also be bypassed by two ways: 1) plug audio input source before starting ROS, and 2) disabling audio plug detection (for those interested in this, read the final Notes).

### Where the hell is the sound mixer now?

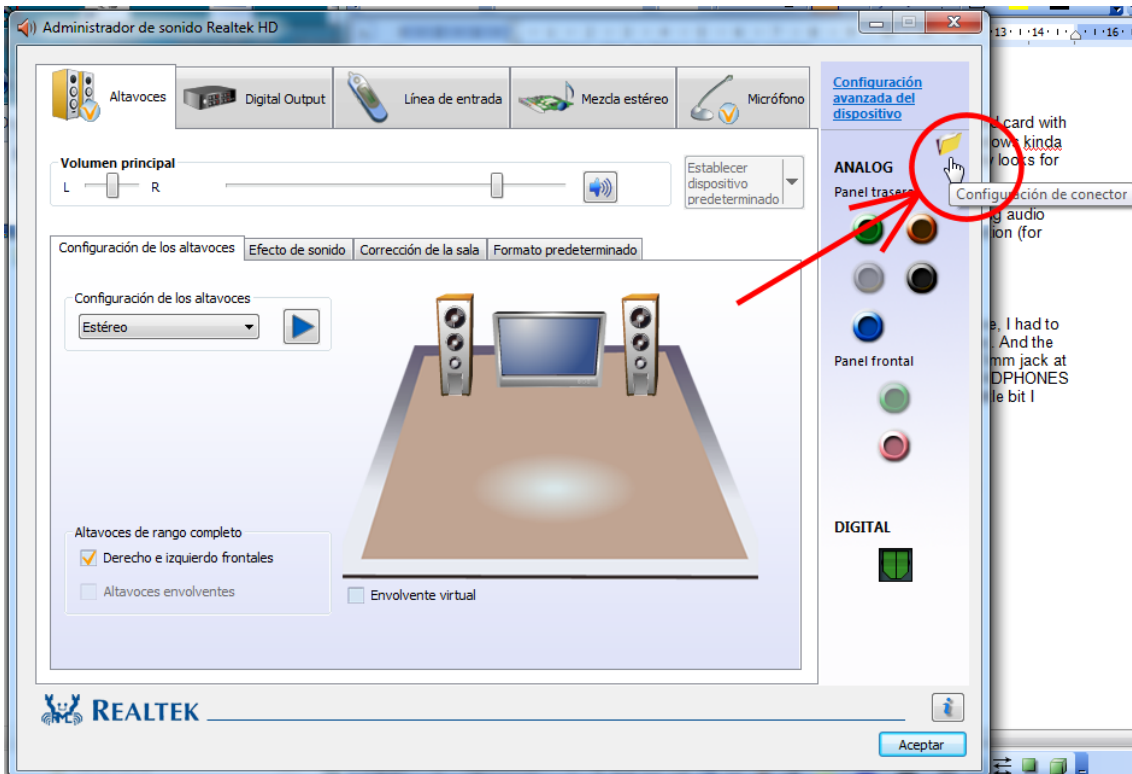
Another problem was that, since my radio station is still not operative, I had to listen to WebSDR (<http://websdr.ewi.utwente.nl:8901/>, for example). And the only way I found to do this was to make an audio cable with one 3.5mm jack at each end and plug it in the rear LINE IN socket and in the front HEADPHONES socket. This had the con that I couldn't hear anything. Googling a little bit I finally solved this annoying "bug" also.

### Note: How to disable plug detection in Realtek sound cards

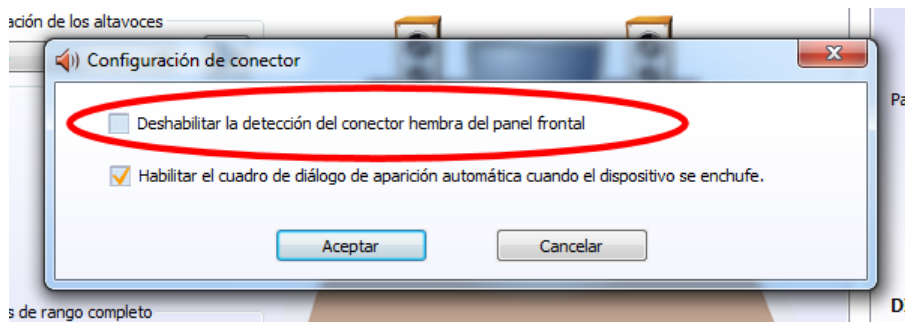
Look for the Realtek *sound administrator* in the Windows icon tray



Double click it and click the folder icon near the top right corner

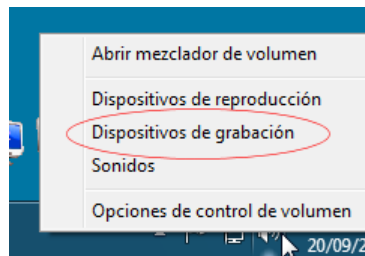


You only need now to set the “Disable front panel female plug detection” as you wish.

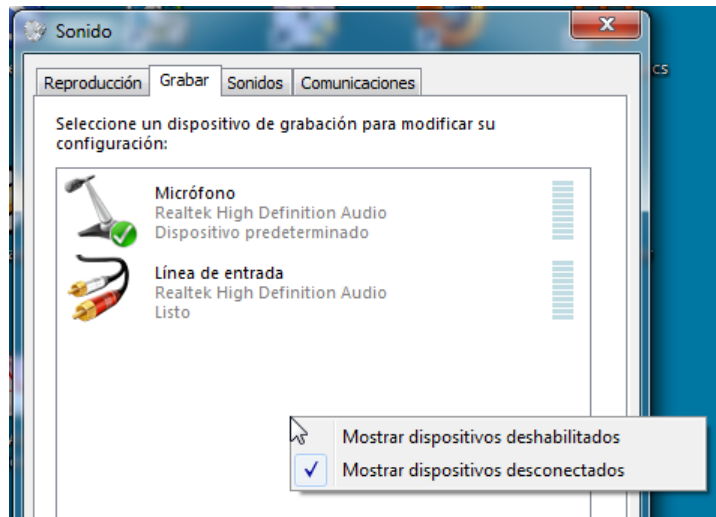


### Note: How to enable sound mixer in Realtek sound cards

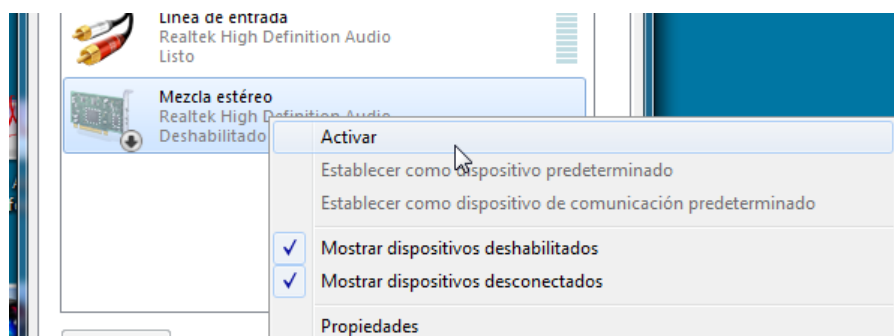
Look for the *volume icon* in the tray  and right click it so a menu appears.



Select the “Recording devices” option. Right click into a blank area in the dialog that appears and check the “Show disabled devices” option.

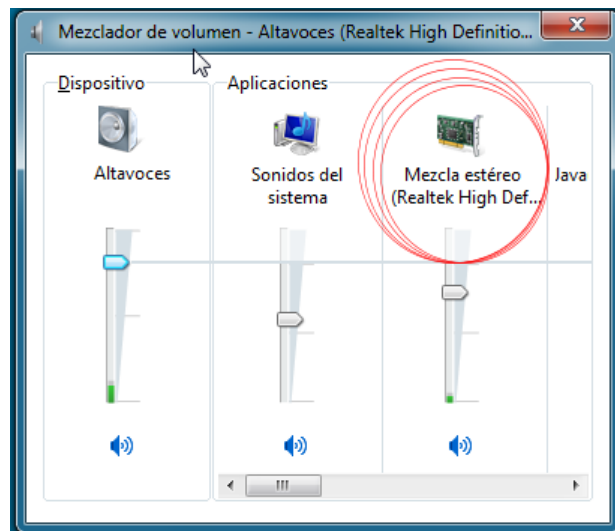


You've the sound mixer!



Right click it and select *Activate*. Click *Ok.*, You've done.

If you open now the Volume Mixer...



You can record "what you hear"!!!!