



The ORARI Daerah Papua IOTA DXpedition to
Bras Island, Mapia Islands OC-276
Papua Province
The Republic of Indonesia
20th - 27th October 2013



ORARI DAERAH PAPUA IOTA DXPEDITION 2013

yb9y.mapia@gmail.com

www.yb9y.com

Introduction

ORARI Daerah Papua IOTA DXpedition Team will carry out a DXpedition to Bras Island, Mapia Islands OC-276 during 18th - 30th October, 2013.

The first goal listed above is to enable as many different radio amateurs as possible to make a contact with Bras. To that end, we will field multiple stations on all HF bands and modes, staffed by a highly experienced team of radio operators. We expect to make between 20,000 and 30,000 contacts with perhaps 10,000 different stations during the DXpedition. The callsign for this operation will be **YB9Y. Bras Island part of Mapia Islands has IOTA reference number OC-276 and never been activated before.** The radio operations will be active **October 20th 12:00 UTC until 27th 2013 24:00 UTC**, with adjustments for weather and local conditions.

We will voyage to Bras aboard the vessel *Papua Lima* from Biak, Papua Province, Indonesia with outbound and inbound stopovers in Jakarta. We will ship and deploy all life support.

This proposal made based on survey results by our survey team on May 22nd and 23rd 2013.

Bras Island

Bras Island is the part of Mapia Atoll is actually north of the equator, the outermost island of Indonesia lies in the Pacific Ocean and the countries bordering Palau. Bras island is part of the government area Noemfoor Biak, Papua province. The island is located in the north of the city of Manokwari with coordinates 0° 54' 31 "N, 134° 19' 31" E.

Bras island is a cluster of islands bordering Mapia Republic of Palau. The distance between the islands with Bras Babelthuap Island (Republic of Palau) is as far as 390 miles. Mapia cluster of islands consists of 3 major islands, namely Bras, Fanildo and Pegun. The islands territory is guarded by military units who have post Bras Island. Mapia islands included in the administrative area of the District of West Supiori, Supiori Regency, Papua Province. The high diversity of marine diota and still maintaining ecosystems in the Islands Mapia provide tourist industry development opportunities both natural attractions, cultural and historical heritage of World War II.

Operations

Logistics

All the radio and campsite gear was assembled by the ORARI Daerah Papua IOTA Dxpediton Team in Jakarta, Indonesia. All gear will be completely tested and appropriately packed for shipment and deployment on the island , in early of September, 2013.

The vessel

The DXpedition will use the vessel Papua Lima, home-ported in Biak. It has non air-conditioned staterooms without carpeting, vanities are optional. It is equipped with seating for 100 passengers. The fuel capacity is enough to giving the vessel a range of 1000 miles. It has radio, GPS, radar, color sonar.

The crew of the Papua Lima is very experienced with taking teams to Bras, including fishermen, military personnel, radio DXpeditions, etc. The crew is also experienced with the difficult landing across surf at Bras.



Landing

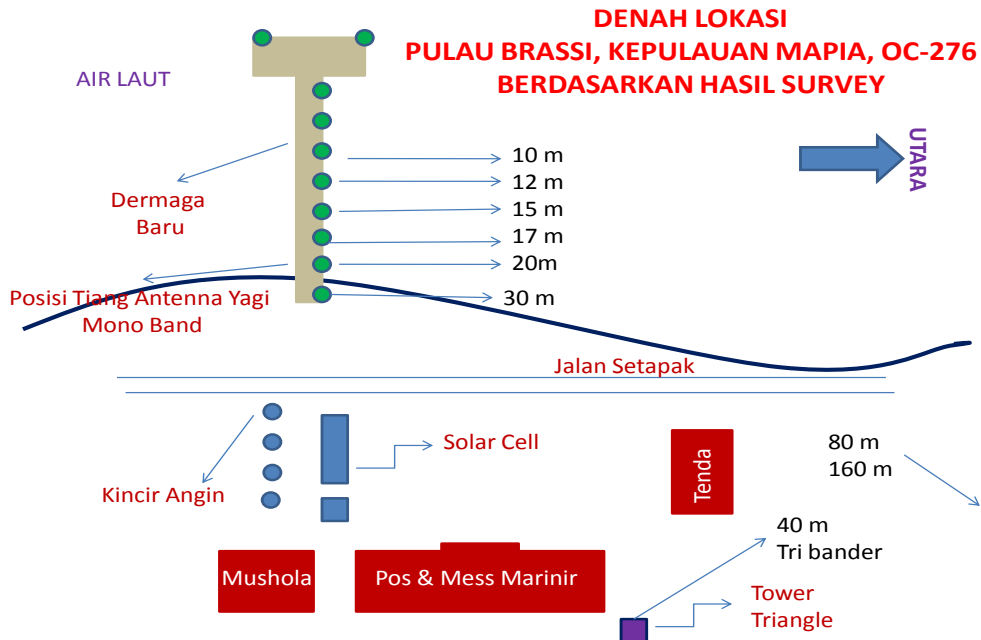
Bras presents a serious challenge for landing. The crew of the Papua Lima is responsible for safely landing the team.



Camp location and layout

The location of the camp already selected. However a generic layout is shown below.

This layout is designed to place the transmitted sites as far from each other as possible, and make optimum use of the area in the tents.



Facilities

Shelters



We will be using four military tents as shown in the photo to the left. These tents are 5x6 meter, or 30 sq. meter. floor space each. Two of the tents will be used to form the GEM (Greeting, Eating, Meeting) tent, while the other two will be used for the radio operating sites.

Water

Drinking water will be delivered to the campsite by the crew from the boat using plastic jerry cans. In addition, we plan to deploy a pump and filtering system to obtain potable water from the lagoon and purify it for washing and bathing.

Generators



We will prepare 4 (four) Yamaha 5 kW generators. These units supply only 240 VAC (not 120 VAC). We will use two of these for the HF radio sites, holding two in reserve.

Galley

The chef will included in the team member and will provide all of the food for all, except emergency reserves. We plan to have a minimal service galley equipped to provide appropriate healthy meals, snacks, and drinks.

Communications

Amateur Radio operation

We are ready to ship gears for ten complete HF stations, plus one 6m station.
We will operate all amateur bands 160-6m and all legal modes.
We hope to log a total of more than 20,000 QSOs.

Antennas

The HF radios will use beam antennas located on the beach.

Radios

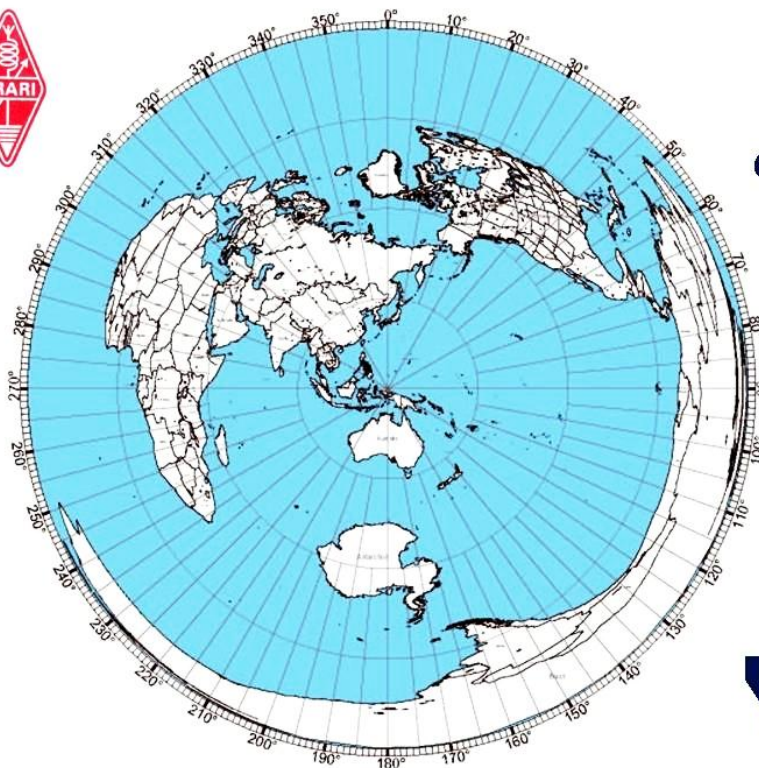
The radio for HF stations are loaned from our team members.

6 meters

We will install and operate a station for operation on 6m. This station will be located at a considerable distance from the HF sites.

Wi-Fi

We will implement completely Wi-Fi networks, for the radio networking.



**Grid. Loc. PJ70dv
OC-276**

YB9Y

Real Time Log

We will attempt to provide data communications via satellite link so our radio log data can be sent directly to internet and can be shown in real time.

All logging computers are networked. The system runs automatically, without human interaction.

Social Networking

We plan to extensively use social media to reach large numbers of people who may have interest in the project, and who have the potential to be a major resource for connections and support. In particular, we could be active on sites such as Facebook, Twitter and others.

We expect that by uploading photos and video taken on Bras Island during the DXpedition to websites such as these, we can generate special interest and involvement in the project.

Well the implementing of this technology on Bras Island is a worthy and complete goal, it will also provide guidance for the design and implementation of the similar activity for the **2014 DXpedition to *Habee Island OC-275*, and it's also never been activated.**

Conformance

The ORARI Daerah Papua IOTA DXpedition Team has received the radio operating license from the Indonesia government. Copies of these are shown on the next page.

It is policy of ORARI Daerah Papua IOTA DXpedition Team to observe and operate within all permits, regulations, and recommendations of the various agencies with interest in Bras Island, with particular attention to minimizing impact on the site.

Safety

We consider safety of the personnel and protection of the resources at Bras to be paramount, taking precedence over any other planned activities. The DXpedition Leader, considers it his responsibility to enforce all relevant laws and rules, and will personally guarantee the appropriate behavior of every member of the team.

Waste and sanitation

We will bring our own portable facilities for handling wastes. We will not generate any toxic waste; it will be essentially from food preparation, wash water, and human sanitation. Any materials that cannot be safely cycled into the environment will be brought back onboard the vessel.

Teardown

At the end of the operation, all of the facilities will be dismantled and packed, in preparation for disembarking. Some of this may be done while radio operations are still underway.

Cleanup

It is the policy of ORARI IOTA DXpedition to leave a completely clean campsite. It is the policy of this DXpedition to leave nothing on the island that was brought for this project. It is the responsibility of the DXpedition Leader to ensure that there is zero residual from the occupation, and we will document that as we leave.

Radio Permit

 KEMENTERIAN KOMUNIKASI DAN INFORMATIKA REPUBLIK INDONESIA
DIREKTORAT JENDERAL SUMBER DAYA DAN PERANGKAT POS DAN INFORMATIKA
Menuju Masyarakat Informasi Indonesia
Jl. Medan Merdeka Barat No. 17, Jakarta 10110 Telp. 021-3835931, 3835959 Fax. 021-3860754, 3844036 www.postel.go.id

IZIN KHUSUS AMATIR RADIO

DATA STASIUN AMATIR RADIO KHUSUS

NOMOR IZIN : 0047B0613
NAMA PANGGILAN : YB9Y
ALAMAT STASIUN : Pulau Brassi - Kepulauan Mapia - Papua
00° 54' 30,6" LU - 134° 19' 31,2" BT (OC – 276)

DAYA : Dibawah 30 MHz 2.000 Watt
Diatas 30 MHz 500 Watt

PENGGUNAAN STASIUN : ISLAND ON THE AIR DX PEDITON
ORARI Daerah Papua

BAND FREKUENSI : Semua Band Amatir untuk Tingkat Penegak
KELAS EMISI : Semua Emisi Amatir untuk Tingkat Penegak

BERLAKU DARI : 10 Oktober 2013 s/d 31 Oktober 2013

DATA PENANGGUNG JAWAB

NAMA LENGKAP : Drs. Yanuarius Resubun MSP
NAMA PANGGILAN : YB9YZ
JENIS KELAMIN : Laki-laki
TEMPAT, TANGGAL LAHIR : Langur, 13 Januari 1958
PEKERJAAN : PNS
ALAMAT : BTN Buncen Damai No 86 Kotaraja
Jayapura - Papua

Jakarta, 20 Juni 2013

DIREKTUR JENDERAL
SUMBER DAYA DAN PERANGKAT POS DAN INFORMATIKA
DIREKTUR OPERASI SUMBER DAYA

 PENANGGUNG JAWAB
Drs. Yanuarius Resubun MSP

 RACHMAT WIDAYANA
NIP:19590217 198703 1002

Documentation

ORARI Daerah Papua IOTA DXpedition has established a website www.yb9y.com for the 2013 DXpedition. This site evolves as the project develops, and will contain links to real-time information from the DXpedition.

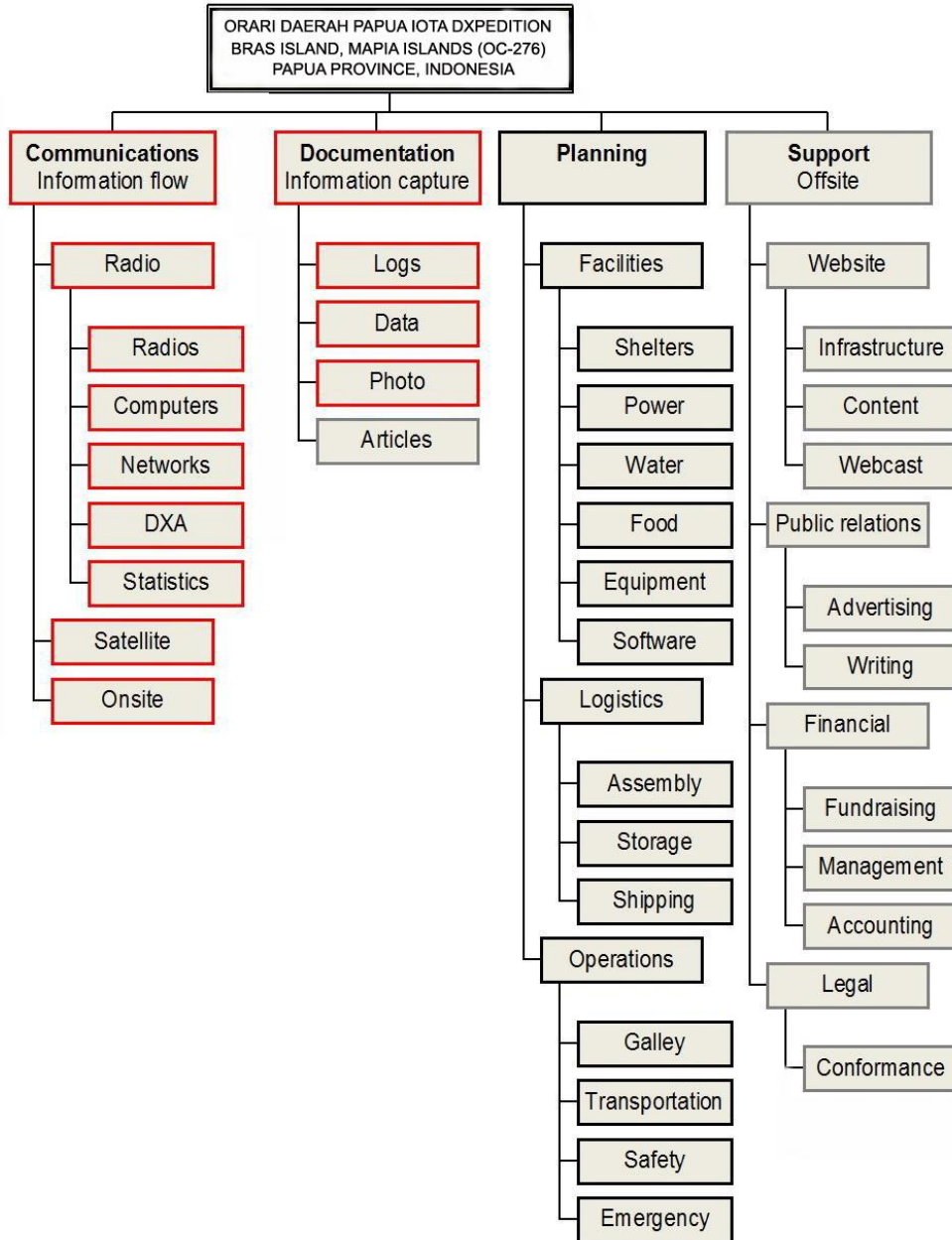
It is the policy of ORARI Daerah Papua IOTA DXpedition to complete all required documentation, particularly reports to agencies issuing permits and similar constraints.

Participants will be strongly encouraged to keep some kind of daily journal of their activities, and to make these journals available to the DXpedition archives.

The collection of digital images will be preserved for permanent archiving and future reference.

Organization

This project is supported by Ministry of Communication and Information Technology Republic of Indonesia and ORARI Headquarter. The following organizational chart shows these main activities, plus the ancillary activities of Planning and Support (offsite). In this chart, the boxes with red border are activities done primarily onsite at Bras while and the boxes with black/gray borders are planning/support activities done offsite.



Responsibilities

The DXpedition Leader's role is mainly planning, decisions, and contacts. Authorities and responsibilities include:

- ✓ Select the Dedication and Honorary DXpedition Leaders
- ✓ Appoint the Advisory Board
- ✓ Appoint the co-organizers
- ✓ Set the overall schedule
- ✓ Apply for permits and licenses
- ✓ Define requirements for the logistics and operations
- ✓ Approve selection of the vessel
- ✓ Enter into agreements for professional services
- ✓ Solicit and form alliances
- ✓ Ensure legal and procedural issues
- ✓ Ensure compatibility with ORARI and other policies
- ✓ Ensure the completeness of the preparations
- ✓ Manage the overall onsite operations
- ✓ Resolve disputes
- ✓ Document the project.

The Co-organizer's role is mainly *organizational*. Together with the DXpedition Leader, the co-organizers comprise the Executive Board. Authorities and responsibilities of the Board include:

- ✓ Nominate and accept additional team members
- ✓ Solicit and contract for local, regional support
- ✓ Solicit sponsorship from commercial organizations
- ✓ Find sponsors and other contacts
- ✓ Explore and recommend technology and activities for the DXpedition
- ✓ Generate input for a continuously developing public presence (web, etc.)
- ✓ Ensure that donations are completed
- ✓ Accumulate, test, and store equipment
- ✓ Provide complete records of financial transactions.

All Team Members have the responsibility to contribute to the planning, preparation, and execution of the DXpedition. This includes:

- ✓ Help solicit support and other participants
- ✓ Secure equipment and ensure its appropriateness and quality
- ✓ Arrange for shipments and reservations
- ✓ Participate in the activities according to the plan and consensus
- ✓ Keep a journal of activities
- ✓ Complete the DXpedition with appropriate documentation and demobilization.

Schedule

The vessel will sail with part of the team from Biak, Papua at 03:00 UTC on Saturday 19 Oct, 2013, and will make arrive at Bras on Sunday Oct 20, 2013. On the return voyage, the vessel will start around 03:00 UTC on Sunday 27 October 2013.

- 1 Oct 2013 Sending all gears to Biak by Cargo Service.
- 18 Oct 2013 All team members and participants already arrived in Jakarta and ready to fly to Biak, Papua.
- 18 Oct 2013 14:00 UTC, Depart from Jakarta to Biak by airplane.
± 6 hours flying time.
- 19 Oct 2013 03:00 UTC, Depart from Biak to Bras Island by Papua Lima vessel.
± 18 hours sailing time.
- 20 Oct 2013 Setting up radio stations and all gears should be ready
in ± 18 hours.
- 20 Oct 2013 12:00 UTC, Starting the IOTA OC-276 DXpedition !
- 27 Oct 2013 24:00 UTC, Ending of IOTA OC-276 Dxpediton !
Tearing down all equipments
- 27 Oct 2013 03:00 UTC, Depart from Bras Island to Biak by Papua Lima.
± 18 hours sailing time.
- 28 Oct 2013 Arrived at Biak and go to the hotel for rest.
- 29 Oct 2013 Sending back all gears to Jakarta by Cargo Service.
- 30 Oct 2013 01:00 UTC Flying back to Jakarta by airplane.
± 6 hours flying time.
- 30 Oct 2013 07:00 UTC Arrived at Jakarta, all participants continue their flights
to hometown.

Budget

In developing the budget for the 2013 Bras DXpedition, we include the items in the following list.

EXPENSES	EXPENSES (con't)	REVENUE
TRANSPORTATION	CONSUMABLES	PARTICIPANTS
Passage (vessel)	Gasoline	Participants
LOGISTICS	Food	INDIVIDUALS
Shipping	Lumber, materials	Special donors
Storage	Batteries, chargers, etc.	QSLs
FACILITIES	Sanitary supplies	Online donations
Shelters (operations)	Satellite phone rental	Realtime donations
Shelters (sleeping)	Satellite phone time	Souvenirs
Cots, blankets	Satellite phone data	CORPORATIONS
Tables	time	All corporations
Chairs	SPECIAL EQUIPMENT	ORGANIZATIONS
Shelving, storage	Storage media	Other radio foundations
Galley equipment	Safety supplies	Radio clubs
Tableware	Emergency supplies	
White boards, etc.	SPECIAL PURCHASES	
Outhouse, shower	QSL cards	
EQUIPMENT	Postage, envelopes	
Generators	Souvenirs	
Electrical distribution	OVERHEAD	
Water containers	Fees	
Water distribution	Contingency	
Tools		
Hardware		
Cargo boxes		
Fans		

We provide here a few notes on the assumptions that went into this budget.

- ✓ Most of the major radio equipment (radios, antennas, etc.) will be available from the team or on loan or as donations, hence these items do not appear in the list or the budget.
- ✓ The bulk of individual donations is expected from QSL cards and online donations through the website, etc.

The following table shows the original budget for the DXpedition.

YB9Y BRAS ISLAND DXPEDITION BUDGET

EXPENSES

TRANSPORTATION	\$52,500
LOGISTICS	\$6,500
FACILITIES	\$5,000
EQUIPMENT	\$12,500
CONSUMABLES	\$12,000
SPECIAL EQUIPMENT	\$3,000
SPECIAL PURCHASES	\$3,000
OVERHEAD	\$5,000
TOTAL	\$99,500

REVENUE

PARTICIPANTS	\$20,000
INDIVIDUALS	\$24,500
CORPORATIONS	\$30,000
ORGANIZATIONS	\$25,000
TOTAL	\$99,500

Information for participants

Participation in the 2013 Bras DXpedition is by invitation only. However, we welcome inquiries from anyone with legitimate and serious interest in the project. We will ask for a resume and photograph for the website, and we will expect full participation in the planning, preparation, and activities. Said another way, there are no guests on the DXpedition, only participants.

The easiest way to learn more about this project is to study the website (www.yb9y.com). Contact can be made with any current member, as listed on the website and in this document.

The cost to the participants will be \$ 2,000 (two thousands US Dollar)

If a participant withdraws from the DXpedition, he is responsible for finding a replacement (subject to approval); payments will be rolled over to the replacement participant and the original participant can be reimbursed by his replacement. If the DXpedition is cancelled (e.g., unavailability of the vessel), refunds will be made to the extent that monies are recoverable.

Every member of the team will be expected to be in good physical shape, to have a recent medical exam, provide medical records and information to the DXpedition, sign a mutual liability waiver, obey all laws and rules regarding customs, the vessel, and Bras Island, and provide records such as written logs, photographs, and electronic data relevant to the records of the DXpedition to the DXpedition Leader.

Rights to intellectual property will remain with the creator (e.g., photographs remain the property of the photographer) but the DXpedition has rights to copies and to the reasonable non-commercial use of those materials for the documentation of the project.

The fee covers all expenses from the time of boarding from Jakarta Airport and the vessel to the time of disembarking. Participants are responsible for their personal travel to/from the flight, vessel, for special foods, liquor, etc., not included in the general provisioning, personal cameras and computers (except that the DXpedition will provide the radio logging computers), storage media and will be responsible for any exceptional service such as special food preparation, rescue, medical treatment, hospitalization, etc.

Information for contributors

The team will be providing about 1/4 of the total DXpedition expense, and we will be seeking the other 3/4 from a variety of sources, including (but not limited to) the following:

- Amateur radio foundations
- Amateur radio clubs
- Individual DXers, through online donations
- Individual DXers through QSL card requests
- Companies engaged in the amateur radio industry, including manufacturers of equipment, service providers, and publications
- Individuals and organizations engaged in extending social networking through Facebook, Twitter, etc.
- Companies engaged in satellite communications equipment, software, or services
- Individuals who collect souvenirs of events such as DXpeditions
- Companies involved in the travel industry, including information, clothing, equipment, travel services, etc.
- Media, including magazines (e.g., Outside), filmmakers, etc.
- Companies involved in the industrial equipment industries (e.g., shelters, generators, tools, supplies, machines, etc.)

If you are in one of the above classes, or any other class of supporters, we invite you to consider helping this DXpedition with donations of equipment, money, or services. Loans of certain equipment such as radios, antennas, generators, power equipment, etc. are equivalent to cash donations; we are happy to return the equipment at the end of the project. If you are an individual, you can help with cash donations and by using your personal network to make contacts that would be beneficial.

We are very happy to provide commercial logo exposure on the websites, display logos and products during the DXpedition (e.g., your logo on the side of the shelters, on clothing, etc.), stream your corporate ads to various social media, include mobile devices, endorse appropriate products, etc.

For further information about donations, please contact us at email yb9y.mapia@gmail.com

ORARI Daerah Papua IOTA DXpedition Team

ORARI Daerah Papua IOTA DXpedition Team is a part of “ORARI” amateur radio society in Indonesia. Its main activities are to carry out DXpeditions to the remote islands.

ORARI Daerah Papua IOTA DXpedition Team leader is Mr. John Resubun YB9YZ, and accompanied with Mr. Triadi P. Suparta YBØKVN as a Co-organizer. Both of them are very well known in organizing the Indonesia IOTA DXpeditions.

Major radio operators are experienced and well known in amateur radio such as YBØAZ, YBØECT, YBØJS, YBØTSU, YB1GJS, YB1CCF, YD1JZ, YB1KAR, YC1KAF, YD1GCL, YB1MH, YD1XUH, JA1PBV (WK1S), etc.

Yanuarius Resubun – [YB9YZ](#)



Triadi P Suparta – [YBØKVN](#)



Wisnu Widjaja – [YBØAZ](#)



Gjellani J Utama – [YB1GJS](#)



Prihandoyo – [YBØECT](#)



Suryadi Umar – [YBØJS](#)



Faisal Anwar – [YB1PR](#)



Ronny Latupeirissa - [YB9WR](#)



Jozardy Sefriano - [YD1JZ](#)



Danu Ongkowiono - [YD1GCL](#)



Kasmuri Anwar - [YD1MRI](#)



Rizal - [YD1ORZ](#)



Terry Ridwan Mufti - [YC1KAF](#)



Yoyon Suryana - [YB1CCF](#)



Heri Suhaeri - [YB1KAR](#)



Edy Kusumah - [YD1XUH](#)



Achmad Soetijono - [YC1CDV](#)



Laily Dimyati - [YBØTSU](#)



Tatang Subarna - [YB1MH](#)



Randi Pratama - [YCØRAN](#)



Ria Indriastuti – [YCØKVM](#)



Susana Ardiningtyas – [YD1LUX](#)



Ujang Safta – [YCØLLY](#)



Syafruddin – [YB9SB](#)



Sadao Ito - [WK1S / JA1PBV](#)



Dervin Beldman - [PD9DX](#)



Wahyu Ningrat – [YC1CWK](#)



Most of the operators are exactly the same person who operate DXpedition at :

1. YB8Y – OC 221 : 20.344 QSOs in 4 days
2. YEØM – OC 177 : 20.966 QSOs in 5 days

Previous DXpeditions

[YB8Y Ohoi Ew, Kei Islands, OC-221, March 2012](#)



YB8Y Ohoi Ew, Kei Islands, OC-221, March 2012



YB8Y Ohoi Ew, Kei Islands, OC-221, March 2012



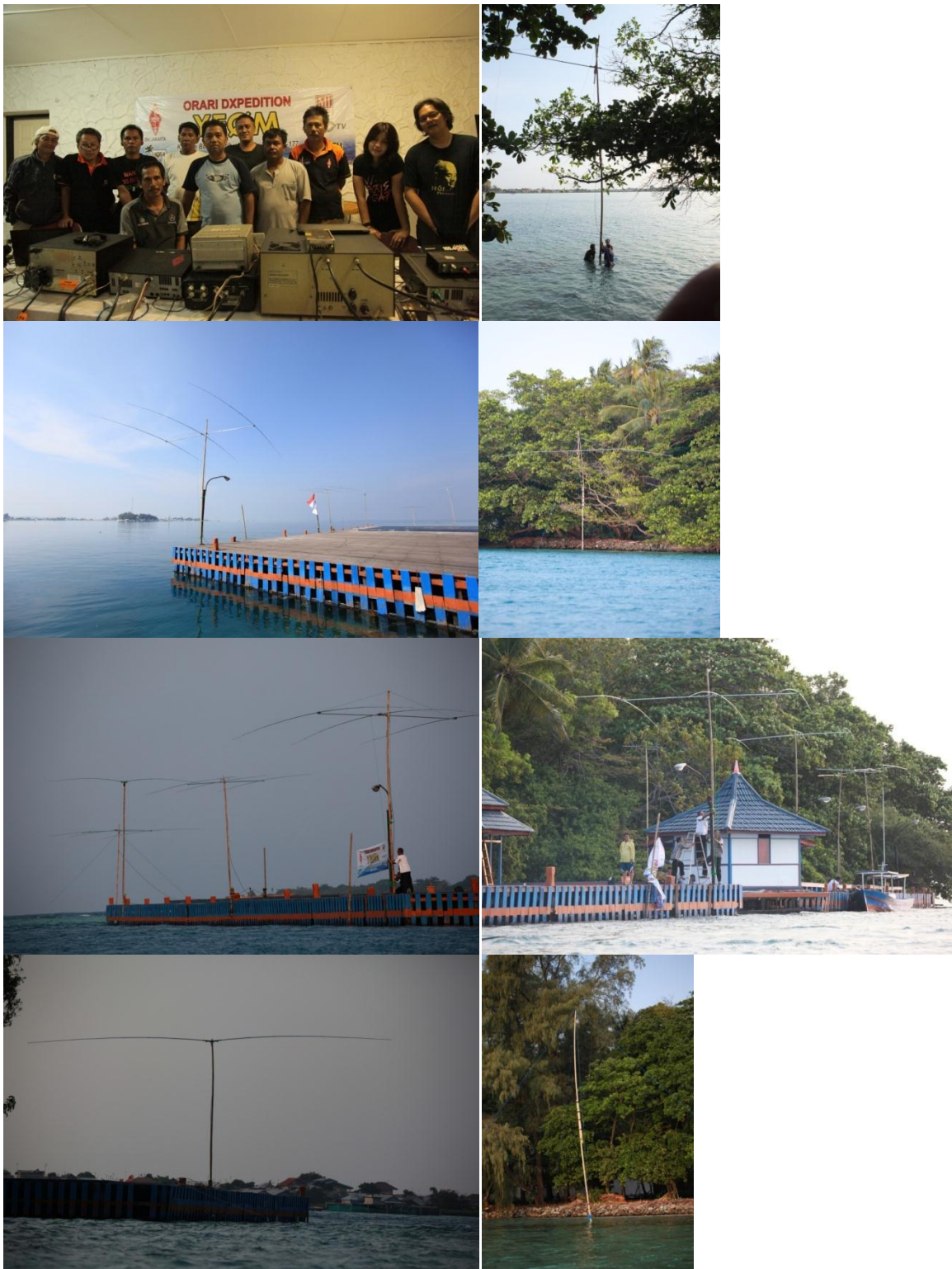
YB8Y Ohoi Ew, Kei Islands, OC-221, March 2012



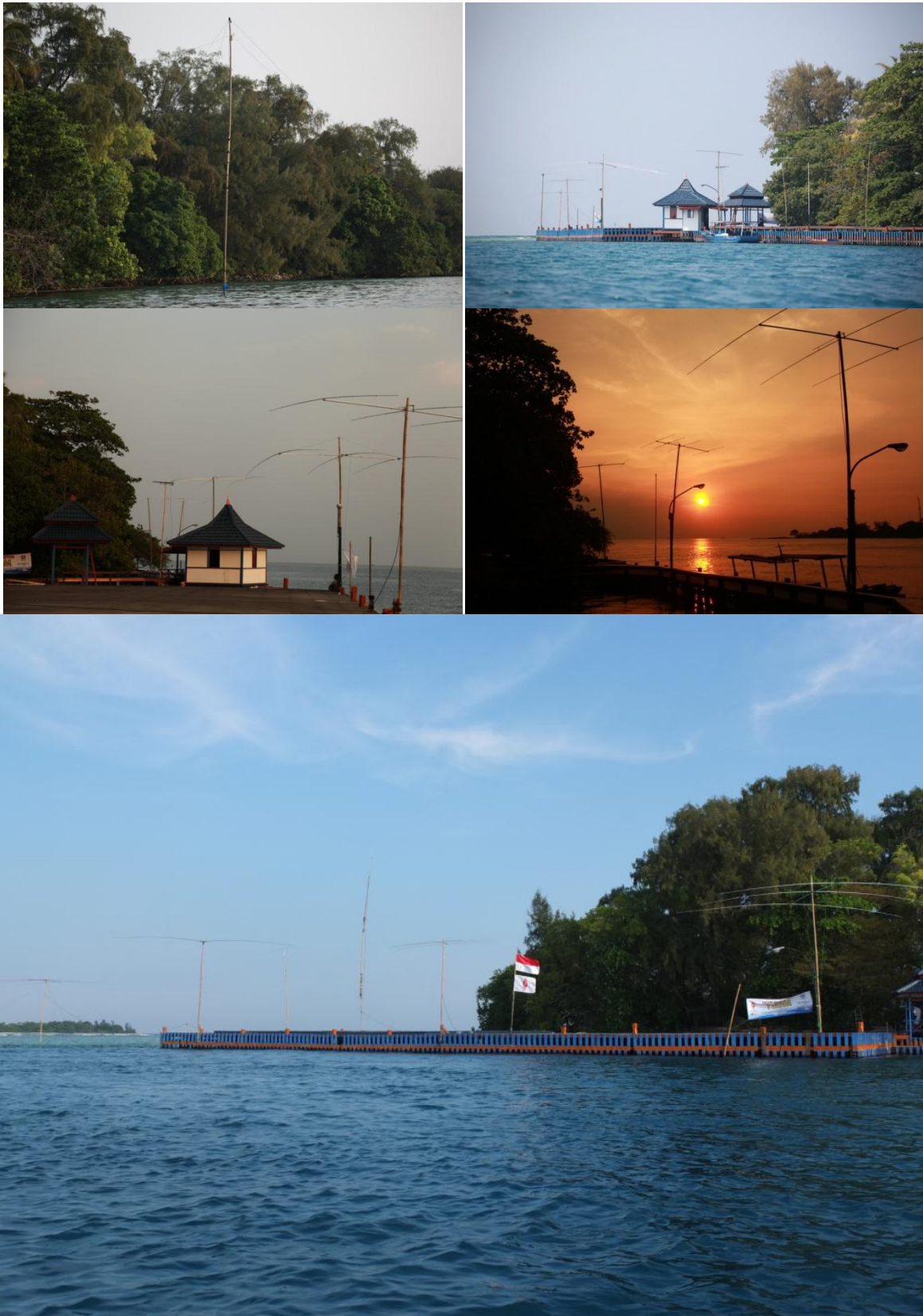
[YEØM Kaliage Island, Seribu Islands, OC-177, July 2012](#)



[YEØM Kaliage Island, Seribu Islands, OC-177, July 2012](#)



[YEØM Kaliage Island, Seribu Islands, OC-177, July 2012](#)



Official Website for YB9Y

www.yb9y.com

E-mail: yb9y.mapia@gmail.com



QSL Route YB9Y

All QSL card are handled by our QSL Manager, **Mr. Gjellani J. Sutama YB1GJS** Griya Depok Asri C-8 No.7 Depok Jawa Barat 16411 Indonesia.

We will use Online QSL Request Service (OQRS) in this DXpedition and if you want DIRECT QSLs, you will need to send minimum US\$ 2 (two) for each card to cover the cost of the postage to your country. Maximum five QSOs in one QSL Card.

If you have worked us on all bands or modes, and you want a separate card for each QSO, please supply US\$ 2 for each card, to cover the postage for all the cards to your country. QSL Manager will only accept any US Dollars. **We cannot accept Internal Reply Coupons (IRCs) and any currency from other country.** Cards will be returned by buro if no US\$ or IRC or any other currency is enclosed.

All cards sent by BURO will be QSLed via the BURO. QSL Manager will process direct QSLs first and then when the bulk of DIRECT cards are finished he will begin to process the BURO cards.

All cards sent with sufficient greenstamps and a Self Address Envelope will be returned direct, as quickly as our QSL Manager can process them.

We will do everything possible to avoid sending back a "NOT IN LOG" card. We will check, cross check and look for anything that matches. But we will NOT QSL for a QSO that is not in our logs.

DONATIONS & SPONSORSHIPS

The Team are pleased to receive donations and sponsorships from all amateur radio around the world and the companies or other societies who would like to support this DXpedition.

All contributors will be shown and categorized in our website.

The major contributors also will be shown on our QSL card and uniform.

Your donations, sponsorships and supports for this DXpedition may be sent by wire transfer to this bank account:

Wisnu Widjaja
Bank Central Asia
Account No. 273 1 126 099 (Rupiah)
Account No. 505 0 700 960 (US Dollar)
SWIFT CODE: CENA IDJA

or via PayPal with clicking this link

https://www.paypal.com/cgi-bin/webscr?cmd=_donations&business=HB2Y5JG4V2LV8&lc=ID&item_name=MAPIA%20ISLANDS%20IOTA%20DXPEDITION%202013&item_number=YB9Y¤cy_code=USD&bn=PP%2dDonationsBF%3abtn_donateCC_LG%2egif%3aNonHosted

We are waiting for your support!

For further information about donations, please contact our Finance Manager:

Mr. Wisnu Widjaja - YBØAZ via yb9y.mapia@gmail.com or yb0az@yahoo.com

Thank You.